

2-3. How to Equip Evaporating Pad

- ▶ Cut the evaporating pad as [Pic.2-1], and fold to fix with pins as [Pic.2-2].

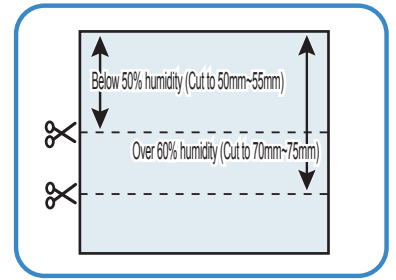
⚠ **Humidification might be different from the size of evaporating pad.**

- ▶ It is important to keep high humidity when hatching or 1-2 days before hatching. During incubation, humidity should be kept 45~55% in case of waterfowl, 40~45% in case of poultry, and 35~45% in case of parrots. At the last stage of incubation (hatching period), the humidity should be kept over 65% for all species of birds. (Rcom Pro20 incubator automatically controls these conditions according to incubation period.)

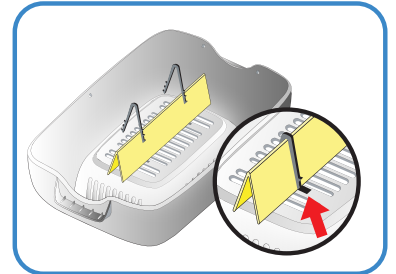
- ▶ Try not to open the window in hatching time to maintain high humidity.

※ When Temp. is above 37 ° C, humidity could not go over 70%.

Tip At least every 3 days, the water level should be checked. If the water is in shortage, refill the water. Tap water is better than any other filtered water or underground water to maintain good performance of evaporating pad.



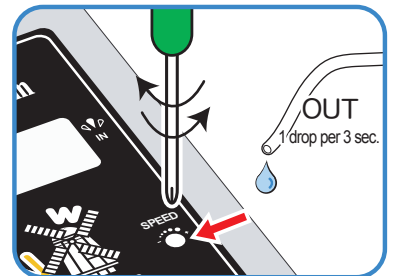
[Pic.2-1]



[Pic.2-2]

2-4. How to Control Water Flow Speed in the Silicon Tube.

- ▶ The amount of water can be easily controlled with APS.
- ▶ With cross type screw driver, turn "Speed" clockwise to increase water flow and vice versa to decrease. [Pic. 2-3]
- ▶ To prevent from over flooding and drop down in the chamber, use the APS with lowest water flow speed. (1 drop of water in 3 seconds)



[Pic.2-2]

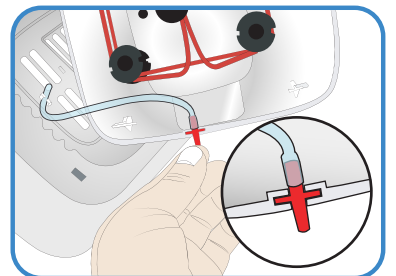
3. How to Replace the Tube

- ▶ If the silicone tube wear out and it does not pump water effectively, replace silicone tube as shown the picture 1-3 above.

⚠ **Be sure to use the silicon tube supplied from Autoelex. (Ø2.6 × 3.5)**

4. Storage and Cleaning

- ▶ Do not wash with water but wipe with soft cloth.
- ▶ In case of long time storage, detach the silicon tube from the APS and remove the water from the tube. Keep the tube without kink. It helps the tube hole not block.
- ▶ When assembling again, stretch the tube to open the hole in case the tube is blocked.



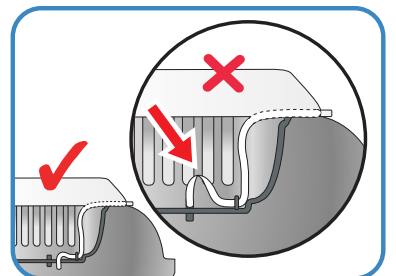
5. Pumping Failure and The Solution

- ▶ Water does not pumping out, or abnormal noise comes out even if pump is working, silicon tube could be folded and blocked.

※ When it does not work, please check below.

1. whether place water-in tube and water-out tube on right direction.
2. whether the motor works to an anticlockwise direction.
3. whether cut the silicon tube to 35mm exactly and fully insert.

※ If you still have the problem, please inquire to manufacturer Autoelex co.,Ltd. or the distributor in your country.



6. Specifications

Name	APS - ST	APS - PRO
Input Voltage	DC 9 - 12V	12V(12V adaptor included)
Power Consumption	20mA	40mA
Dimension	(W)75 × (D)28 × (H)100(mm)	(W)75 × (D)28 × (H)100(mm)
Weigh	110g	150g

Visit our web site (www.r-com.co.kr) for more information on our products and other informations. Update of information : download the necessary information from resource room in Rcom website.

AUTO ELEX CO.,LTD.
www.R-com.co.kr
www.autoelex.com

- COMPANY : #612 DukAm-Ri, JuChon-Myeon, GimHae-City, GyeongNam, KOREA
- TEL : 82-55-337-2560 (Direct to sales team)
- FAX : 82-55-337-2561-3, 2567 (Office)
- E-MAIL : auto@autoelex.com (Sales team)